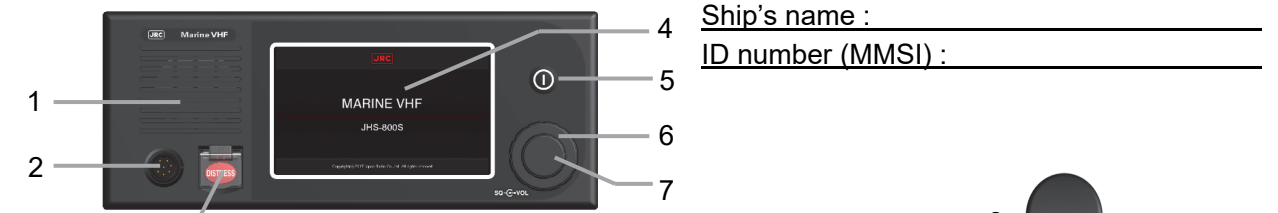


Menu tree

| Menu | Submenu 1 | Submenu 2 | Print func | Description |
|---------------|--------------|-------------|----------------------------------|--------------------------------------|
| DSC CALL | | | | DSC non-distress call |
| RELAY | | | | DSC drobose call |
| DISTRESS EDIT | | | | Editing distress message |
| DSC LOGS | RX DISTRESS | | ✓ | Received distress call log |
| | RX OTHERS | | ✓ | Received non-distress call log |
| | TX CALLS | | ✓ | Transmitted call log |
| AIS INFO | SHIPS LIST | | ✓ | Other ships list |
| | PROX CHECK | | | Registered ships notice |
| VOICE FUNC | PLAY-BACK | | | Playback received voice msg |
| | PUBLIC ADDR | | | PA using external loudspeaker |
| | INTCOM | | | Starting intercom |
| CH OPRN | SCAN | ALL CH | | All channel scan |
| | | MEMORY CH | | Memory channel scan |
| | | SELECT CH | | Selected channel scan |
| | DUAL WATCH | | | Watching CH16 & 1 channel |
| | TRIPLE WATCH | | | Watching CH16 & 2 channels |
| | MEMORY CH | CH LIST | ✓ | Setting CH from memory CH list |
| | | CH EDIT | | Editing memory CH list |
| | PRIV CH | | ✓ | Private channel |
| | WX CH | | ✓ | Weather channel |
| | REGION | ITU | | ITU channel mode |
| | | USA | | USA channel mode |
| | | CAN | | Canada channel mode |
| | | IWW | | Inland waterway mode |
| | CH SQL SET | | | Preset squelch setting |
| BCF START | | | Block channel function for river | |
| MAINT | ALERT LIST | ALERT HIST | ✓ | Alert information |
| | SYSTEM INFO | | ✓ | System information |
| | S/W VER | | ✓ | Software version |
| | DSC AF CHECK | | | DSC signal inspection |
| | CERT MARK | | | Displaying certification mark |
| SELF DIAG | TXRX | | ✓ | RF CKT self diagnosis |
| | OWN CTRL | | ✓ | Control CKT self diagnosis |
| | DSC LOOP | | ✓ | DSC loop self diagnosis |
| | TXRX LOG | | ✓ | RF CKT self diagnosis log |
| | CTRL LOG | | ✓ | Control CKT self diagnosis log |
| TEST CALL | | | | DSC safety test call |
| SETUP | DATE&TIME | | | Setting date and time |
| | POSN SET | POSN/TIME | | Setting position, time and indicator |
| | | POSN SOURCE | | Setting priority for position source |
| | DISP SET | LCD ADJ | | LCD adjustment |
| | | SOUND | | Setting related to sound |
| | | KEY ASSIGN | | Programmable key assignment |
| | | UNIT NAME | | Unit name registration |
| | | MENU SHTDN | | Setting menu shutdown timer |
| | | HANDSET | | Setting hook and sidetone |
| | | CH AREA | | 10-key assignment on CH area |
| | | S METER | | Setting RF strength meter use |
| | | CTLR START | ✓ | PWR ON mode (controller only) |
| | BT SET | BT FUNC | | Setting Bluetooth use |
| | | BT PAIR | ✓ | Pairing Bluetooth SPMIC |
| | ADDR LIST | COAST | ✓ | Coast station list registration |
| | | SHIP | ✓ | Ship station list registration |
| | | GROUP | ✓ | Calling group list registration |
| | | PSTN | ✓ | PSTN number list registration |
| | DSC OPRN | AUTO ACK | ✓ | Automatic acknowledgement |
| | | RX SOUND | ✓ | Safety/Routine alert sound |
| | | MDCL USE | ✓ | Medical use for urgency call |
| | | NEUT USE | ✓ | Neutral use for urgency call |
| | | EXP MMSI | ✓ | Expanded MMSI |
| | | GROUP ID | ✓ | Own ship's registration |
| | | INACTV T/O | ✓ | Inactivity timer set |
| | | AUTO CH CHG | | Automatic channel change |
| | AIS FUNC | | | Setting AIS use |
| PRN PROP | | ✓ | Printer property set | |
| BLOCK CH | | ✓ | Waypoints registration | |
| CODE INPUT | | | (for maintenance) | |

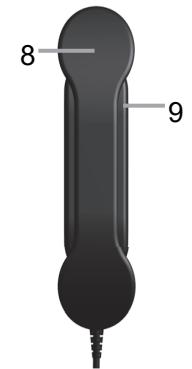
JHS-800S

MARINE VHF RADIOTELEPHONE

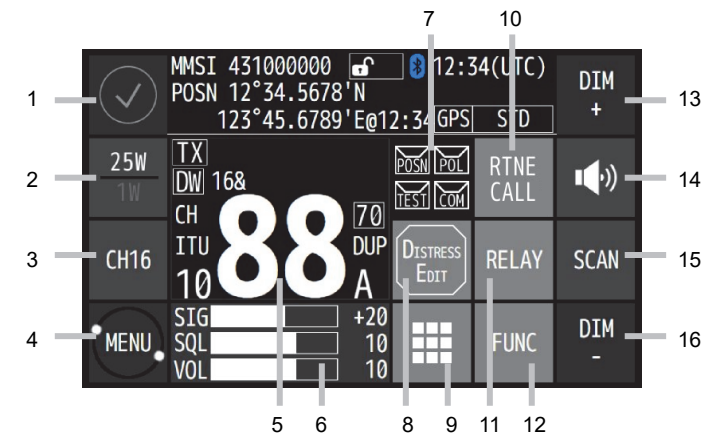


- 1. Internal loudspeaker**
- 2. Handset connector**
- 3. DISTRESS button**
When in distress, sends a DSC distress alert by pressing for 3 seconds.
- 4. Color LCD/ touch panel**
Use buttons on the touch panel for operation.
- 5. PWR button**
To turn on the power, press for one second. And to turn off the power, after pressing this button, follow the dialogue on the popup screen.
- 6. Squelch control**
Adjusts squelch level.
- 7. Volume control**
Adjusts internal loudspeaker volume.
- 8. Handset**
When using in radiotelephone mode, press and hold the PTT key to talk.
- 9. Cradle**

Ship's name : _____
ID number (MMSI) : _____



Displays and buttons



- Displays the alert information screen.
- Switches transmitting power between 25 W and 1 W.
- Sets the radiotelephone to the priority channel.
- Displays the hierarchal menus screens.
- Displays TXRX information such as channels.
- Indicates squelch and volume control position.
- Indicates the DSC automatic ACK setting. Additionally, CALL LIST button is appeared if some calls are ongoing, and restarting the call is available after touching the button and selecting that call from the ongoing call list.
- Displays a menu to edit the distress alert messages.
- Displays the numeric keypad (10-key) to set channels.
- Displays the DSC individual routine call menu.
- Displays the DSC distress relay call menu.
- Displays the various function keys.
- Increases the dimming level in 15 steps.
- Turns on or off the internal loudspeaker.
- Programmable key. Register a frequently using assignable menu or a special function.
- Decreases the dimming level in 15 steps.

1. Calling and communicating with the radiotelephone

Before operating below, previously adjust the squelch and volume controls to adequate positions.

Making a radiotelephone call

1. Select CH16 or another agreed channel.
2. Lift the handset from the cradle, then press the PTT key and make a call as described below.
 - (1) Say the calling station name ... Repeat 3 times.
 - (2) "this is"
 - (3) Say own ship's name ... Repeat 3 times.
 - (4) "over"
3. Release the PTT key to listen.
4. When answered and agree on a working channel, change to that channel.
5. After checking that no station uses the working channel, begin conversation.
6. When terminating communications, say "out".

Receiving a call on CH16

1. Lift the handset from the cradle, then press the PTT key and respond to the call as described below.
 - (1) Say the caller station name.
 - (2) "this is"
 - (3) Say own ship's name.
 - (4) "channel"
 - (5) Working channel number
 - (6) "over"
2. Release the PTT key, wait a moment, and then switch to the proposed working channel.
3. After checking that no station uses the working channel, begin conversation.
4. When terminating communications, say "out".

2. Using the feature of the radiotelephone

- 1) Dual watch : [MENU] → [CH OPRN] → [DUAL WATCH] → [EXE]
(Note: Previously set a channel other than CH16.)
- 2) Triple watch : [MENU] → [CH OPRN] → [TRIPLE WATCH] → [EXE]
(Note: Previously set two channels other than CH16.)
- 3) All CH scan : [MENU] → [CH OPRN] → [SCAN] → [ALL CH]
- 4) Memory CH scan : [MENU] → [CH OPRN] → [SCAN] → [MEMORY CH]
- 5) Select CH scan : [MENU] → [CH OPRN] → [SCAN] → [SELECT CH]
→ Enter the channel range (from/To) → [EXE]
- 6) Setting a memory channel : [MENU] → [CH OPRN] → [MEMORY CH] → [CH EDIT]
→ Select the CH type and enter two digits of the memory channel.
- 7) Setting a private channel : [MENU] → [CH OPRN] → [PRIV CH] → Select the private channel.
- 8) Setting a weather channel : [MENU] → [CH OPRN] → [WX CH] → Select the weather channel.
- 9) Changing a channel region : [MENU] → [CH OPRN] → [REGION] → [ITU] / [USA] / [CAN] / [IWW]
- 10) Setting a preset squelch : [MENU] → [CH OPRN] → [CH SQL SET] → SQL adjustment → [SET]


3. Making a non-distress call via the DSC


- 1) Routine individual call : [RTNE CALL] → Enter the receiver ID → [CALL]
- 2) Routine group call : [MENU] → [DSC CALL] → [EDIT] → [CALL TYPE] → Select RTN/GROUP/RT
→ Enter the group ID → [CALL]
- 3) Semi/auto (PSTN) call : [MENU] → [DSC CALL] → [EDIT] → [CALL TYPE] → Select RTN/PSTN/RT
→ Enter the coast station ID → [EDIT] → [TEL NO]
→ Enter the TEL number → [CALL]
- 4) Safety call to all ships : [MENU] → [DSC CALL] → [EDIT] → [CALL TYPE] → Select SAF/ALL/RT → [CALL]
- 5) Safety call to an individual station : [MENU] → [DSC CALL] → [EDIT] → [CALL TYPE] → Select SAF/INDV/RT
→ Enter the receiver ID → [CALL]
- 6) Urgency call to all ships : [MENU] → [DSC CALL] → [EDIT] → [CALL TYPE] → Select URG/ALL/RT → [CALL]
- 7) Urgency call to an individual station : [MENU] → [DSC CALL] → [EDIT] → [CALL TYPE] → Select URG/INDV/RT
→ Enter the receiver ID → [CALL]
- 8) Individual call using AIS information : [MENU] → [AIS INFO] → [SHIPS LIST] → Select a station from ships list.
→ Select the category. → After that, follow the menu display.

(Note: The working channel is entered automatically, but can also be changed manually.)

4. Making a distress alert via the DSC

When in distress, make use of the dedicated red **DISTRESS** button to send a distress alert.

 **CAUTION**



- DO NOT test the distress alert.
- When sending the distress alert, follow the instructions of the captain or the officer in charge.
- If a false distress alert is transmitted accidentally, touch [CANCEL] button and transmit the distress cancel following the appeared dialogue screen. And then report the false distress alert to a nearby RCC (Rescue Coordination Center/ in Japan, inform the nearest Japan Coast Guard) referring the guidance displayed on the screen.

Information to be reported:
Ship's name, type, nationality, and ID number, the date/time, location and reason why the false distress alert was transmitted. Also the unit model name and manufacture number/date, if possible.

- Quick distress alert : To send the distress alert quickly, press **DISTRESS** button for 3 seconds. After receiving the acknowledgement, lift the handset and follow this procedure. "MAYDAY"/ "this is"/ the own ship's ID (MMSI)/ ship's position/ the nature of distress/ a rescue request and any other useful information.
- Distress alert after editing : If time permits, send the distress alert after editing the message as follows: Touch [DISTRESS EDIT] button to open the Edit menu and enter the NATURE and position and the time as needed. Then, without closing that menu, press **DISTRESS** button for 3 seconds.
(The subsequent procedure is as with mentioned above.)

5. Silencing a receiving alert sound of the distress/urgency DSC message

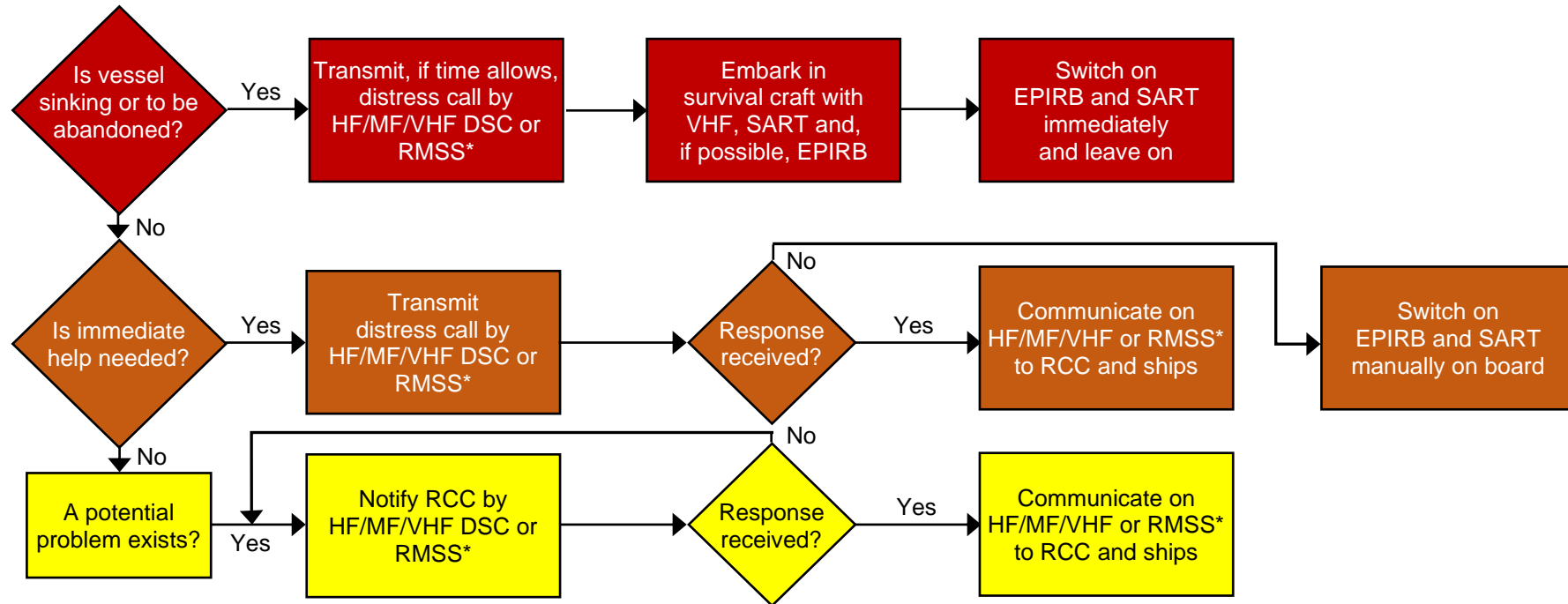
When receiving a distress alert or an urgency call, the receiving alert will basically continue to sound unless silenced manually. To silence the alert sound, touch [CLOSE] button to close the new BAM alert information screen and then [STOP] button on the DSC reception screen. After that, handle the message according to that content.

6. Maintenance

- 1) Self-diagnosis of the transceiver : [MENU] → [SELF DIAG] → [TXRX] → Select a test target → [EXE]
- 2) Self-diagnosis of the controller : [MENU] → [SELF DIAG] → [OWN CTRL] → Select a test target → [EXE]
- 3) Checking the "loop test" only : [MENU] → [SELF DIAG] → [DSC LOOP] → [EXE]
- 4) DSC safety test call : [MENU] → [TEST CALL] → Enter the receiver ID → [CALL]

ANNEX

GMDSS OPERATING GUIDANCE FOR SHIPS IN DISTRESS SITUATIONS



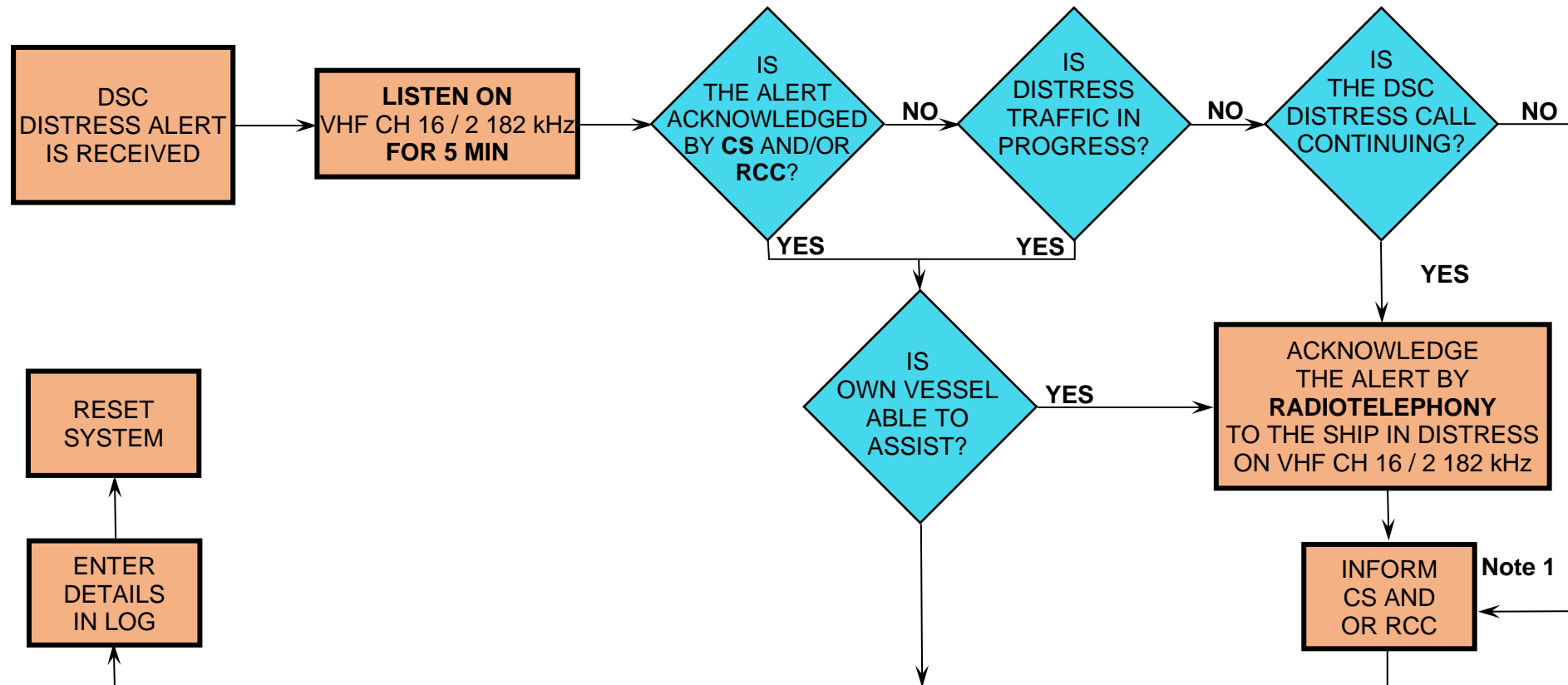
* Recognized mobile satellite service

1. EPIRB should float free and activate automatically if it cannot be taken into survival craft.
2. Where necessary, ships should use any appropriate means to alert other ships.
3. Nothing above is intended to preclude the use of any and all available means of distress alerting, including those listed in COLREG 72, annex IV.

| | Frequencies for Distress Communications | |
|------|---|----------------|
| | Digital selective calling (DSC) | Radiotelephone |
| VHF | Channel 70 | Channel 16 |
| MF | 2 187.5 kHz | 2 182.0 kHz |
| HF4 | 4 207.5 kHz | 4 125.0 kHz |
| HF6 | 6 312.0 kHz | 6 215.0 kHz |
| HF8 | 8 414.5 kHz | 8 291.0 kHz |
| HF12 | 12 577.0 kHz | 12 290.0 kHz |
| HF16 | 16 804.5 kHz | 16 420.0 kHz |

FLOW DIAGRAM 1

ACTIONS BY SHIPS UPON RECEPTION OF A VHF / MF DSC DISTRESS ALERT



REMARKS:

Note 1: Appropriate or relevant RCC and/or coastal station should be informed accordingly. If further DSC distress alerts are received from the same source and the ship in distress is beyond doubt in the vicinity, a DSC acknowledgement may, after consultation with an RCC or coastal station, be sent to terminate the call.

Note 2: In no case is a ship permitted to transmit an all ships DSC distress alert relay on receipt of a DSC distress alert on either VHF channel 70 or MF channel 2 187.5 kHz.

CS = coastal station

RCC = rescue coordination centre

国際VHF無線電話装置
Marine VHF Radiotelephone
Model JHS-800S



注意



- 遭難時以外の遭難警報の送信は禁止されています。
- 遭難警報の送信は、本船の責任者の判断により実施してください。
- 遭難警報を受信した場合は、本船の責任者に通報してください。
- 誤って遭難警報を送信した場合、CANCELボタンにより遭難警報のキャンセル送信を行ってください。その後、誤送信したことを救助調整本部 (RCC、日本の場合は最寄りの海上保安部署) に画面の案内に従って以下の事項を通報します。
船名、船種、船籍、ID番号、誤発射及び停止した位置とその時刻、誤発射の原因、できれば装置の型式、製造番号、製造年月



CAUTION



- DO NOT transmit distress alert except for distress situation.
- Distress alert must be under the instruction of person in charge.
- If a distress alert is received, inform the person in charge.
- If a false distress alert is transmitted accidentally, touch the CANCEL button and transmit the distress cancel referring the guidances displayed on the screen.
And then report the false distress alert to a nearby RCC (Rescue Coordination Center/ in Japan, inform the nearest Japan Coast Guard.) Information to be reported:
Ship's name, type, nationality, and ID number, the date/time, location and reason why the false distress alert was transmitted.
Also the unit model name and manufacture number/date, if possible.

この警告ラベルは国際VHF無線電話装置の近くの見やすい場所に貼り付けてください。

Stick this label on clearly visible surface at in the vicinity of marine VHF radiotelephone.

JRC 日本無線株式会社

JRC *Japan Radio Co., Ltd.*